

(19) World Intellectual Property
Organization
International Bureau



(43) International Publication Date
24 February 2005 (24.02.2005)

PCT

(10) International Publication Number
WO 2005/017324 A1

(51) International Patent Classification⁷: **F01L 13/00**

(21) International Application Number:
PCT/GR2004/000043

(22) International Filing Date: 12 August 2004 (12.08.2004)

(25) Filing Language: English

(26) Publication Language: English

(30) Priority Data:
20030100353 18 August 2003 (18.08.2003) GR
20040100263 1 July 2004 (01.07.2004) GR

(71) Applicants and

(72) Inventors: **PATTAKOS, Manousos** [GR/GR]; Lampraki 356, GR-184 52 Nikea Piraeus (GR). **PATTAKOS, John** [GR/GR]; Lampraki 356, GR-184 52 Nikea Piraeus (GR). **PATTAKOS, Emmanouel** [GR/GR]; Lampraki 356, GR-184 52 Nikea Piraeus (GR).

(81) Designated States (unless otherwise indicated, for every kind of national protection available): AE, AG, AL, AM, AT, AU, AZ, BA, BB, BG, BR, BW, BY, BZ, CA, CH, CN,

CO, CR, CU, CZ, DE, DK, DM, DZ, EC, EE, EG, ES, FI, GB, GD, GE, GH, GM, HR, HU, ID, IL, IN, IS, JP, KE, KG, KP, KR, KZ, LC, LK, LR, LS, LT, LU, LV, MA, MD, MG, MK, MN, MW, MX, MZ, NA, NI, NO, NZ, OM, PG, PH, PL, PT, RO, RU, SC, SD, SE, SG, SK, SL, SY, TJ, TM, TN, TR, TT, TZ, UA, UG, US, UZ, VC, VN, YU, ZA, ZM, ZW.

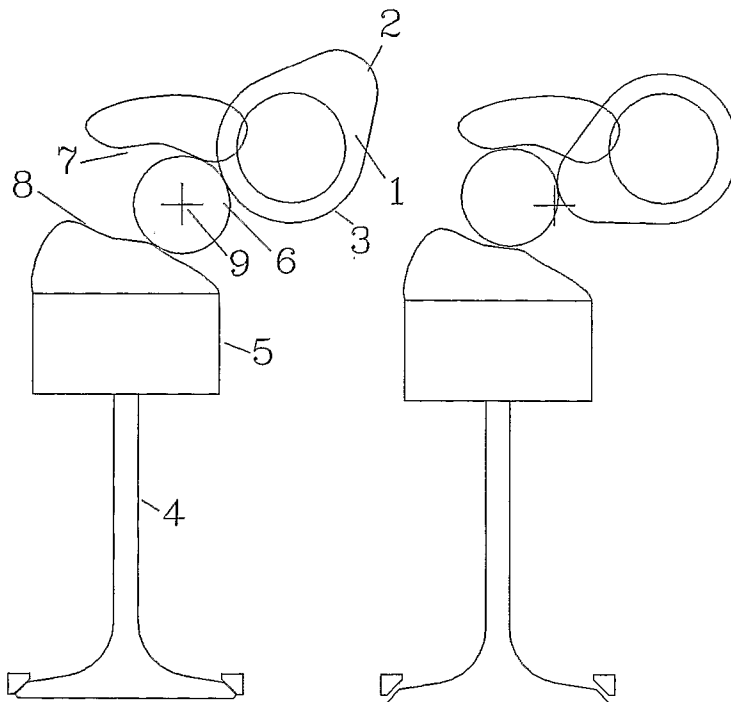
(84) Designated States (unless otherwise indicated, for every kind of regional protection available): ARIPO (BW, GH, GM, KE, LS, MW, MZ, NA, SD, SL, SZ, TZ, UG, ZM, ZW), Eurasian (AM, AZ, BY, KG, KZ, MD, RU, TJ, TM), European (AT, BE, BG, CH, CY, CZ, DE, DK, EE, ES, FI, FR, GB, GR, HU, IE, IT, LU, MC, NL, PL, PT, RO, SE, SI, SK, TR), OAPI (BF, BJ, CF, CG, CI, CM, GA, GN, GQ, GW, ML, MR, NE, SN, TD, TG).

Published:

- with international search report
- before the expiration of the time limit for amending the claims and to be republished in the event of receipt of amendments

For two-letter codes and other abbreviations, refer to the "Guidance Notes on Codes and Abbreviations" appearing at the beginning of each regular issue of the PCT Gazette.

(54) Title: VARIABLE VALVE GEAR



(57) Abstract: The invention provides a variable valve gear particularly for internal combustion engines, in which a control cam (2) of a camshaft (1) acts, by way of a free cam follower, being supported on a rotatable control surface, to a valve (4) to produce an adjustment of the valve stroke. The valve stroke can vary continuously from a maximum value to zero while the valve clearance is held unchanged. In one case the system is nothing more than a roller (6) trapped among a cam lobe, a control shaft (7) and a valve actuator (5).

WO 2005/017324 A1

VARIABLE VALVE GEAR

The invention provides a variable valve gear particularly for internal combustion engines, in which a control cam of a camshaft acts, by way of a free cam follower, being supported on a rotatable control surface, to a valve to produce an adjustment of the valve stroke. The valve stroke can vary continuously from a maximum value to zero while the valve clearance is held unchanged.

The closest prior art is the patent application PCT/GR02/00035.

What a variable valve actuation system actually provides is the permanently optimised breathing, and therefore optimised combustion, at all revs and every load: it extends the efficient rev range of an engine at lower and at higher rpm, upgrading the importance of the higher revs.

The proposed variable valve gear comprises fewer and simpler parts. It achieves reliability at higher revs partly because its quickly moving parts are light and strong and partly because the sliding between the cooperating members is changed into rolling, thereby minimizing friction and wear.

The modification of the present state of the art engine, which provides only two modes of operation with hydraulic control (US 6,470,841 patent) and which holds the world record of power concentration among mass production engines, into an infinite modes engine as shown in Fig 15, turns out to be a simplification because many parts of the state of the art engine are thrown away, with the remaining parts becoming simpler, lighter and stronger, and because the control can be pure mechanical. The control shafts' rotation has proved in practice easy and needs no assistance: a 'throttle' cable coming directly from the gas pedal is enough. Improving the best and simultaneously simplifying it, sounds good.

Despite its infinite modes of operation, it is a more reliable valve train system compared even to the single mode ones. When the engine operates at medium to low revs or at partial load, which happens most of the time and means short valve stroke and weak restoring force due to only slightly compressed valve spring, the loads and the wear and the friction into the valve train system become not just lower than in conventional, but many times lower: the oscillating energy is linearly proportional to both, the restoring force and the valve stroke.

The proposed system can function without drive by wire and without additional supporting systems like variable valve timing, servomotors, special central control unit etc.

The proposed system is easy and cheap in control. The rotation of a control shaft is a more simple and more precise motion compared to the sliding of control members along sliders, used in some of the prior art patents.

In case of a sliding control shaft, like the one described in US 5,373,818 patent, the valve lift and the duration the valve stays open vary necessarily together: small lifts can be only combined to short duration, while long duration can be only combined to high valve lift. At low revs with heavy load an engine needs small lift and long duration, impossible in such mechanisms because they are based on 'scissor' action: the valve at short lifts opens only by the tip of the nose of the cam lobe. In the present application the valve duration can be substantially constant, no matter what the valve lift is.

Figs 1 to 7 show the basic idea.

Figs 8 to 10 show the case of flat bucket lifter and flat control surface.

In Fig 11 it is shown the case of cylindrical control surface.

In Fig 12 a lever, swivelably coupled to the valve actuator, holds the roller, while in Figs 13 and 14 it is the case of partially cylindrical roller.

Fig 15 shows the application in case of rocker arms.

Fig 16 shows the case of spherical roller and Fig 17 is the valve stroke versus crank angle plot.

Figs 18 to 24 show the case of indirect activation of the roller by the cam lobe.

Fig 25 shows the application in case of side cam, based on the mechanism of the closest prior art.

Figs 1 and 2 show the general form of the mechanism for variable lift. A cam follower (6) is displaced by a control cam (2) of a camshaft (1), the cam follower (6), thrusting upon, or being supported by, a control surface (7), displaces the valve actuator (5) and the valve (4). The contact of the cam follower (6) with the valve actuator (5) occurs along a contact surface (8) on the valve actuator (5).

To change the valve lift, the control surface (7) is rotatable relatively to the casing, in general. In case that the control surface is rotatable about a constant axis (9) of the casing, to keep the valve clearance constant or acceptably small at all valve lift range, the axis (9) of rotation of the control surface (7) has to substantially coincide with the axis of the cam follower (6) at the rest position, that is when the cam follower (6) is in touch to both, the basic circle (3) of the control cam (2) and the control surface (7). If the axis of the cam follower (6), at the rest position, coincides with the axis (9) of the rotation of the control surface (7), then the clearance remains constant, whatever the profile of the control surface (7) is.

If the axis of the cam follower (6), at rest position, is offset relative the axis (9), then the valve clearance can stay constant only for specific profile forms of the control surface (7). More specifically, if the control surface (7) has an initial part of cylindrical form and its rotation axis (9) coincides to the axis of the cylindrical surface, then the valve clearance can stay constant as long as the cam follower works in this initial cylindrical part of the control surface (7). After the initial cylindrical part of the control surface (7) it may follow another part along which the cam follower displaces the valve actuator, opening the valve.

Fig 3 shows such a system. In the first row the valve stroke is zero because the cam follower moves only along the initial cylindrical part of the control surface (7) for all camshaft angles. In the second row the cam follower is displaced but the valve initially remains closed and only later the cam follower (6) starts displacing the valve for a medium lift. In the third row the control surface is rotated around its axis, at the cross, and the cam follower opens the valve for many degrees and for a long stroke. A system like this provides variable valve lift, variable duration, variable timing and constant valve clearance. It operates similarly to the system described in US 5,373,818 patent, and it is just simpler.

The control surface (7) can be mounted on a rotatable shaft, which is parallel to the camshaft, in order to avoid intermediate members, sliders, the lash between cooperating members, the room for placing all them and their extra mass and cost. In systems like these, the presence of additional variable valve timing system is a necessity, as well as a central control unit for coordinating the subsystems involved. Fig 4 shows at right the mechanism of Fig 3 with a roller rotatably mounted on the valve actuator (5), and the contact surface (8) being the periphery of this roller.

Figs 6 and 7 show the system applied on a valve. The control surface (7) is rotatable about the axis at the cross. If the two curves (7) and (8) are 'parallel', which means that the cam follower can move in the space between (7) and (8) without displacing the surface (8), then the lift is zero. As the surface (7) is rotated, as shown in the right, the displacement of the cam follower, from the control cam, displaces the surface (8) and the valve actuator (5), opening the valve. By rotating the control surface (7) more, the resulting valve lift increases.

If the zero valve stroke or the small valve strokes are desirable, then there is a way to derive the control surface (7) from the surface (8) of the valve actuator, and vice versa, shown in Fig. 5. In Fig. 5 the contact surface (8) is randomly selected. The cam follower is moved along the surface (8), in touch with surface (8), deriving the corresponding surface (7), as shown in the right. Using spherical instead of cylindrical cam follower, they can be created pairs of control surface / contact surface having 'proper grooves' on them, similar to those in ball bearings, as shown in Fig 16.

It is obvious that there are infinite pairs of control surface (7) / contact surface (8) appropriate to provide continuously variable valve strokes starting from zero, with constant duration, constant timing of valve opening and closing and constant clearance along all valve lift range.

Fig 8 shows the system in case where both control surface (7) and contact surface (3) are plane surfaces, i.e. the simplest possible profiles.

When the control surface (7) becomes parallel to the top plane surface (8) of the bucket lifters, the lift becomes zero. As the control surface (7) becomes more vertical to the plane defined by axis (9) and camshaft axis, the valve lift increases. The clearance is constant. The valve opening duration is constant. The timing of valve opening and valve closing is constant. Fig 17 shows the valve displacement, vertical axis, versus crankshaft rotation angle, horizontal axis. The left set of curves are of the exhaust valves, while the right set of curves are for the intake valves. The curves were taken for control surface rotation of 65, 33, 18, 8, 3 and 1 degrees. The valves open and close at substantially constant crankshaft angles, and although the angular overlap remains unchanged, the actual overlap is radically changed along with the maximum valve lift. From the working medium point of view the actual overlap depends on how much time the intake and the exhaust stay both opened and on how easily exhaust and intake communicate during this time.

The constant duration and timing make the control of the engine easy, with the rotation of the control surface (7) as the basic variable. The control surface (7), thanks to the action of the normal valve springs, returns to its 'idling' position when it is left free. In the simplest case, the accelerator pedal can rotate, by a mere string, the control surface (7) increasing the valve lift, so permitting more mixture to enter the cylinder, which is similar control with the rotation of the throttle valve of the conventional spark ignition engines.

To minimize the friction, instead of a roller cam follower rolling or sliding on the cam lobe (2) and on the control surface (7) and on the contact surface (8), a combined roller cam follower can be used as the one shown in Fig 9. The central pin rolls on a plane surface machined on the control shaft, the middle ring rolls on the control cam and the two side rings roll on the top surface of the bucket lifter.

Fig 10 shows the case of common cam follower activating a pair of valves. The control surface is plane, the internal pin of the cam follower rolls on the flat control surface mounted on the control shaft, the middle ring rolls on the control cam, and each one of the side rings rolling on a plane top valve actuator activates one valve. At left it is for short valve stroke and at the right for long valve stroke. In the middle it is shown the control shaft from different points of view and the cam follower exploded.

Besides the simple and lightweight construction, the system is short and comprises few components. The rollers are easily found in the market while the control shafts are easier to make with plane control surfaces.

Figs 11 and 15 show another embodiment of the system described, with cylindrical control surface (7). In Fig 11 the cam follower (6) rolls or slides on the control cam, on the control surface (7) and on the contact surface (8) which is the periphery of a roller. For lower friction the roller (6), as shown in Fig 15, has an internal pin rolling on the cylindrical control surface (7) while the middle ring rolls on the control cam and the two side rings roll on the roller (8) of the rocker arm.

In the previous analysis the cam follower is actually free. This means that there is no need for rocker arms or levers to hold it in place. The cam follower is trapped among the control cam, the control surface and the contact surface. The cam follower is kept in place axially by appropriate cross section form of the control shaft, of the contact surface and of the camshaft.

If the control surface (7) or the contact surface (8) are of cylindrical form, which actually means they keep the cam follower in a constant distance from an axis, to keep the cam follower in a constant distance from an axis, the cylindrical surface can be substituted by a proper lever swiveling about an axis as shown in Fig 12.

If the control surface (7) or the contact surface (8) are of constant curvature, the cam follower can be only partially cylindrical or spherical, as shown in Figs 13 and 14.

Fig 15 shows the application of the mechanism of Fig 11 in the case of a rocker arm valve actuator driving a pair of valves. The internal pin of the cam follower rolls on a cylindrical surface machined on the control shaft, while the external ring of the cam follower rolls on the control cam and rolls also on a roller rotatably mounted on the rocker arm, to lower the friction.

At zero valve lift, used to deactivate some valves or cylinders, and at short valve strokes a spring mechanism to hold the cam follower in contact to the control cam can be added.

For securing the cam follower in position, especially at extreme positions, the control surface or the contact surface or the casing can be properly modified to act as stopper.

In case of immovable control shaft, that is in case the control shaft is replaced by a thrust wall, and despite the resulting unique mode of operation, the valve train system is actually improved: if the control shaft at the right side of Fig 8 is kept immovable, the bucket lifter valve actuator can be minimized in side, weight and strength because it never comes in contact to the cam lobe, and because the thrust loads are taken before it.

In the side camshaft arrangement shown in Fig 18 and 19, the cam lobe displaces the bucket lifter and the pushrod. The pushrod, in turn, displaces a first rocker arm. The first rocker arm displaces a free roller which in turn displaces a second rocker arm which finally displaces the valve. Depending on the rotation angle of a control shaft, the stroke of the valve varies continuously, while the valve clearance remains constant.

The mechanism operates as the previously described mechanisms with the difference that the cam lobe does not displaces directly the free roller but indirectly, through a linkage, a lever, etc.

Compared to the side cam shaft arrangement shown in Fig 20 and 21, the arrangement of Fig 18 and 19 is preferable, as explained in the following.

It initially conveys on the cylinder head, i.e. close to the valve, the complete or 'full amplitude' cam lobe action as a wide oscillation of the first rocker arm and only then the mechanism with the free roller modifies the cam lobe action into a long or shorter stroke of the valve, depending on the angular position of the control shaft. On the contrary, the arrangement of Fig 20 and 21, with the free roller directly activated by the cam lobe, cannot be so precise at short lifts, exactly where the precision is required, because the in-between joints and the elasticity of the members involved to convey the cam lobe action to the cylinder head, cannot transfer accurately short lifts to the valve, for instance lifts of 0.2 to 0.3 mm.

It is also a matter of accessibility and of lack of space. Upgrading a side cam engine, for instance a Vee eight, according Fig 18 an 19, all modifications concern exclusively the cylinder head, where there is easy access, plenty of space to install the new components and some ready supporting means, like pivot shaft, for the rocker arms and the control shaft. On the contrary the upgrade of a side cam engine according Fig 20 and 21 needs serious modification of the block, while the space and the accessibility in the camshaft area are not the desirable.

As shown in Fig 22 to 24 the mechanism can be applied in overhead camshaft arrangements too, offering more freedom to the designer, for instance the use of common overhead camshaft for intake and exhaust.

All arrangements proposed in the closest prior art can be modified similarly: in the present invention, the member mentioned in the closest prior art as the cam follower is displaced not directly by the cam lobe but indirectly through a lever or a linkage, as in Fig 25, where the version with the swivelably coupled levers of the closest prior art is applied on a side cam engine.

The system is applicable in every poppet valve engine.

Although the invention has been described and illustrated in detail, it is to be clearly understood that the same is by way of illustration and example, and is not to be taken by way of limitation. The spirit and scope of the present invention are to be limited only by the terms of the appended claims.

1. A variable valve gear comprising at least:

a casing; a cam shaft (1);

a control cam (2) mounted on said cam shaft (1);

a valve (4);

a valve actuator (5) for displacing said valve (4);

a roller (6);

a control shaft (7) rotatable about an axis (9) of said casing;

characterized in that:

the roller couples the control cam and the valve actuator and the control shaft, the control cam displaces the roller, and the roller, supported on the control shaft, displaces the valve actuator and the valve at a variable stroke depending on the angular displacement of the control shaft,

thereby a simple, light, compact, precise, low friction, capable for high revs, easy to adjust and easy to control continuously variable valve lift system, with acceptably small valve clearance for all available valve lifts, can result.

2. As in claim 1 characterized in that:

the roller comprises pins and rings in order to reduce or eliminate the sliding of the roller on the members it couples.

3. As in claim 1 characterized in that:

the roller is cylindrical or spherical or barrel shaped or in general is a solid of revolution or comprises solids of revolution.

4. As in claim 1 characterized in that:

the roller is a free roller trapped among the control cam, the control shaft and the valve actuator.

5. As in claim 1 characterized in that:

the roller is only partially cylindrical or it is a fraction of a solid of revolution.

6. As in claim 1 characterized in that:

the roller is in direct contact to the control cam and to the control shaft and to the valve actuator.

7. As in claim 1 characterized in that:

the roller is a roller bearing rolling directly on some or all of the members it couples.

8. As in claim 1 characterized in that:

the axis of rotation of the control shaft and the axis of the roller are substantially offset to each other when, with the valve closed, the roller is in touch to the basic circle of the control cam, the roller is supported along a surface of the control shaft which comprises a lost motion initial part followed by an activation part, said lost motion initial part is substantially a surface of revolution with axis substantially coinciding the axis of rotation of the control shaft,

thereby a variable lift / variable duration / variable timing system results.

9. As in claim 1 characterized in that:

the rotation axis of the control shaft substantially coincides to the axis of the roller when, with the valve closed, the roller is in touch to the basic circle of the control cam,

thereby a variable valve lift with substantially constant duration, timing and clearance can result.

10. As in claim 1 characterized in that:

there is a lever swivelably coupled, at one end, to the valve actuator, and the lever holds, at its other end, the roller.

11. As in claim 1 characterized in that:

the profile of the contact surface between the control shaft and the roller, and the profile of the contact surface between the valve actuator and the roller are properly selected to provide the desirable range of valve lifts with acceptably small valve clearance.

12. As in claim 1 characterized in that:

the profile of the contact surface between the control shaft and the roller, and the profile of the contact surface between the valve actuator and the roller are properly selected to provide valve lifts from substantially zero to a maximum, with acceptably small valve clearance,

thereby a throttless system can result, as well as a system for deactivating some cylinders.

13. As in claim 1 characterized in that:

the profile of the contact surface between the control shaft and the roller, and the profile of the contact surface between the valve actuator and the roller are plane or cylindrical.

14. As in claim 1 characterized in that the roller is displaced by said control cam indirectly, through a linkage, thereby a high precision system can result, suitable for arrangements like the side cam engines.

15. A variable valve gear, comprising:

a cam shaft (1);

a control cam (2) mounted on said cam shaft (1);

a cam follower (33);

a valve (4);

a valve displacing device (5) for displacing said valve (4);

a valve lever (61) swivelably coupled to said valve displacing device (5);

a control lever (8) rotatable about an axis (9) and swivelably coupled to said valve lever (61) at a swivel joint (11);

an adjusting device for displacing said axis (9) along a path; the stroke of said valve (4) is variable according to the displacement of said axis (9) along said path;

characterized in that:

the swivel joint (11) between said valve lever (61) and said control lever (8) is displaced by said control cam (2) indirectly through a linkage;

thereby a high precision system can result, especially suitable for arrangements like the side cam engines.

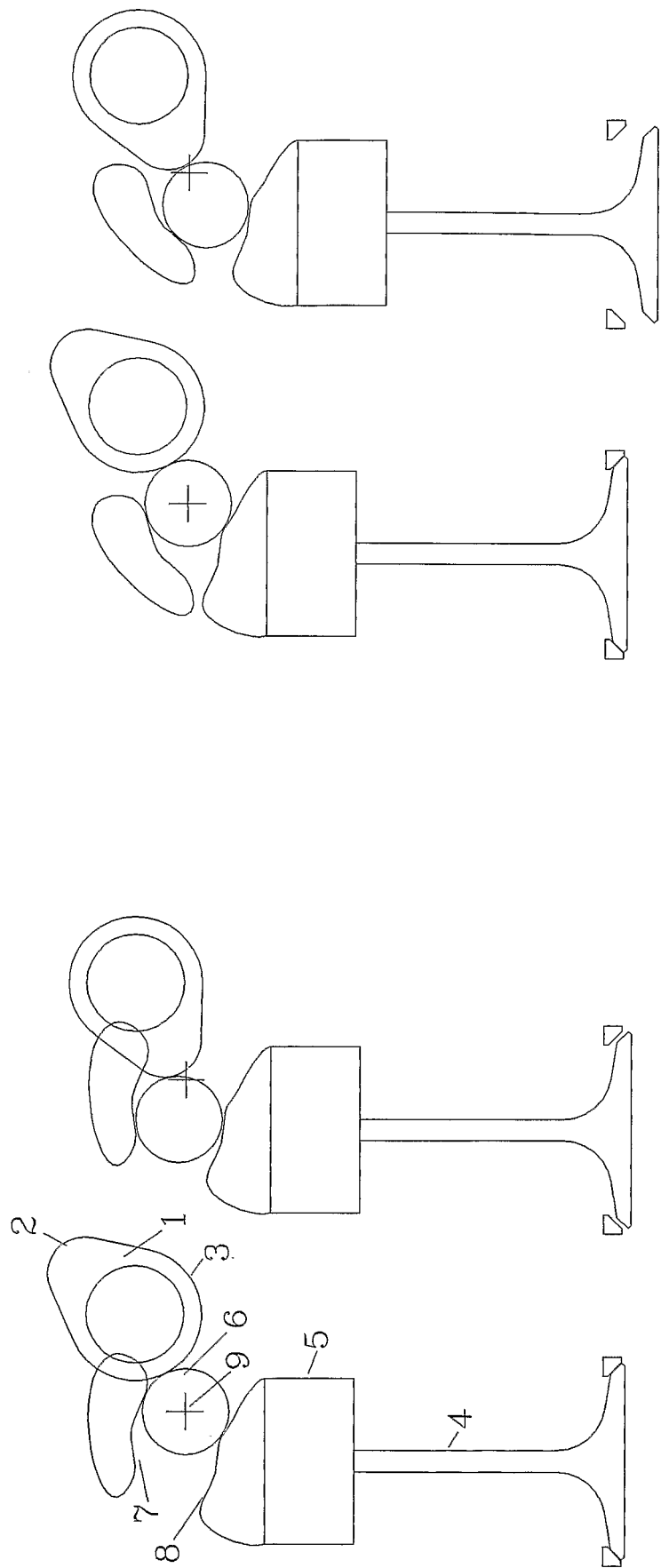


FIG 2

FIG 1

2/16

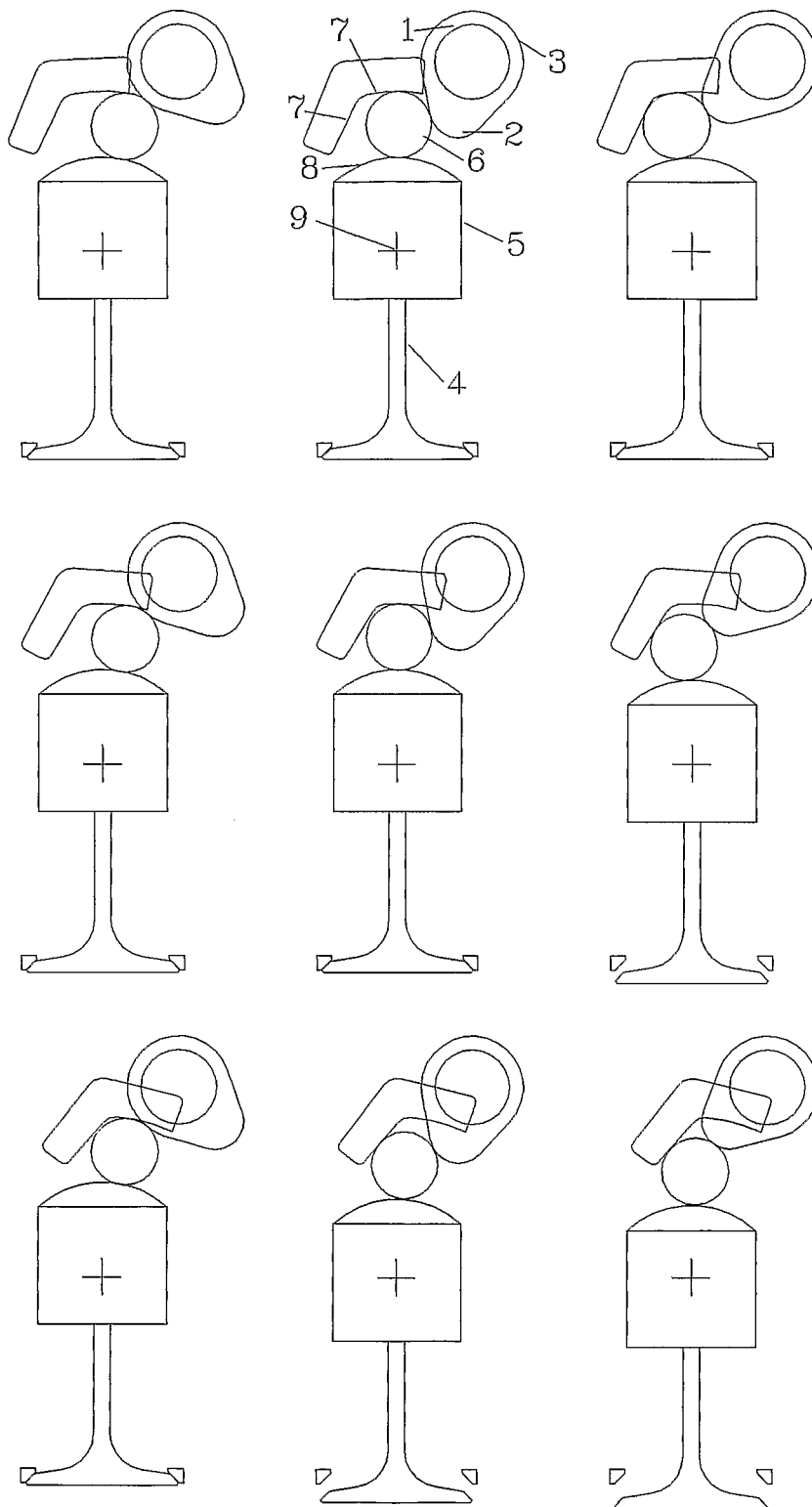


FIG 3

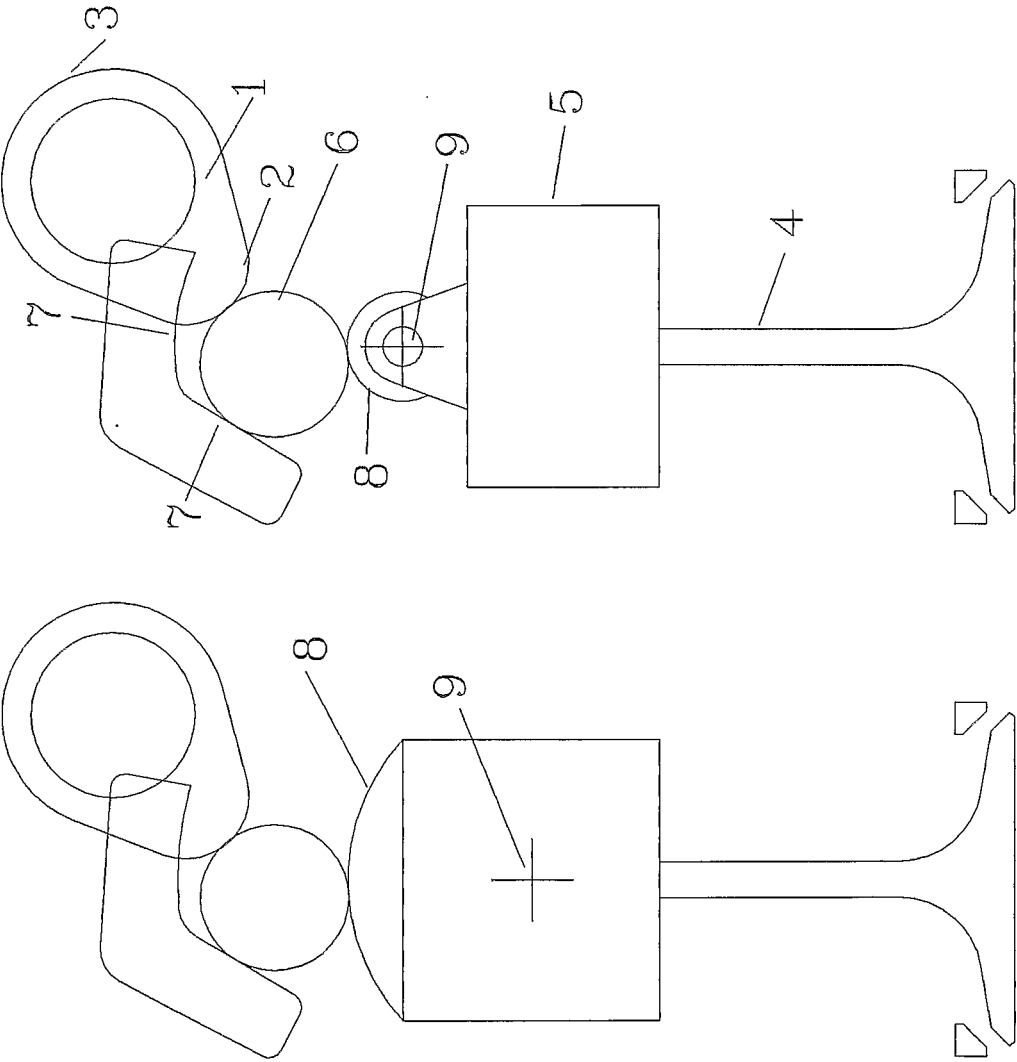


FIG 4

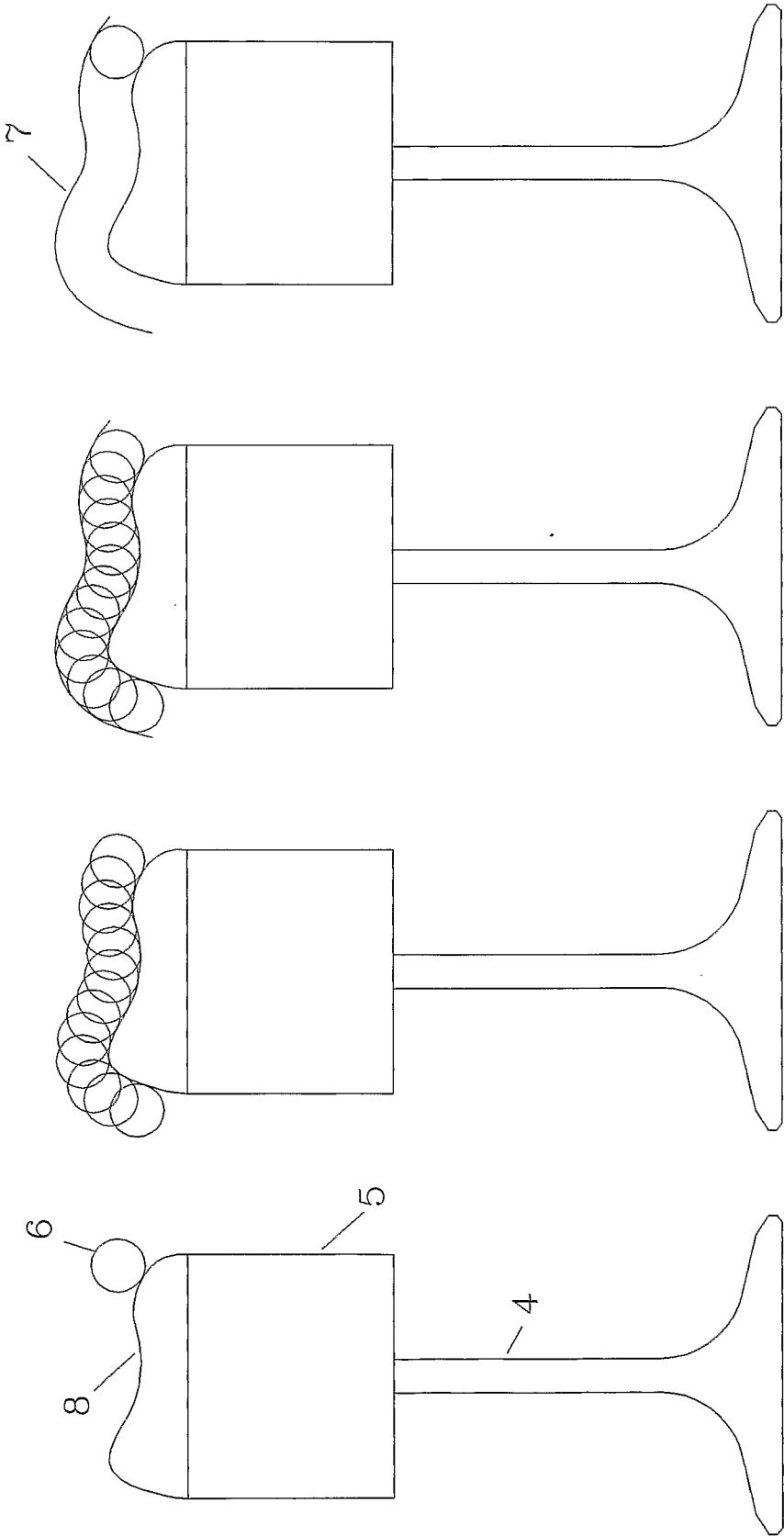


FIG 5

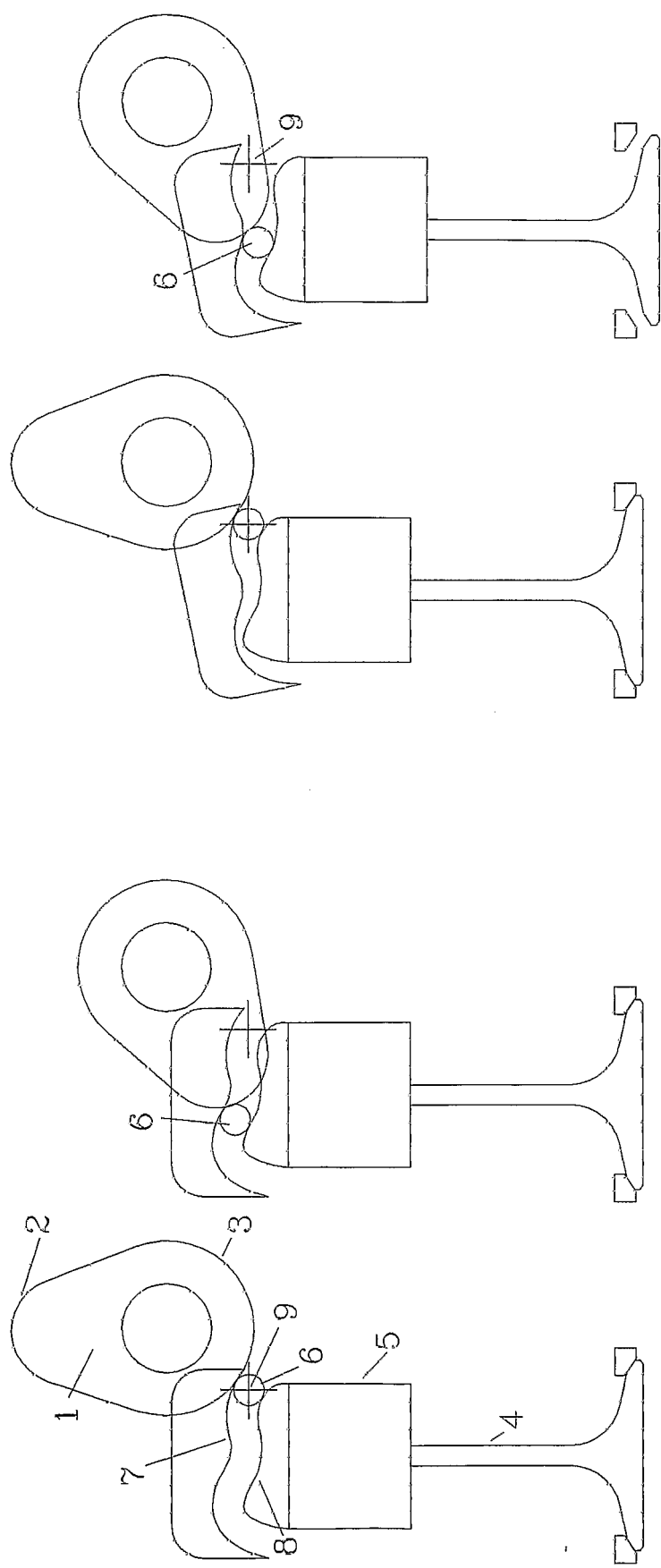


FIG 7

FIG 6

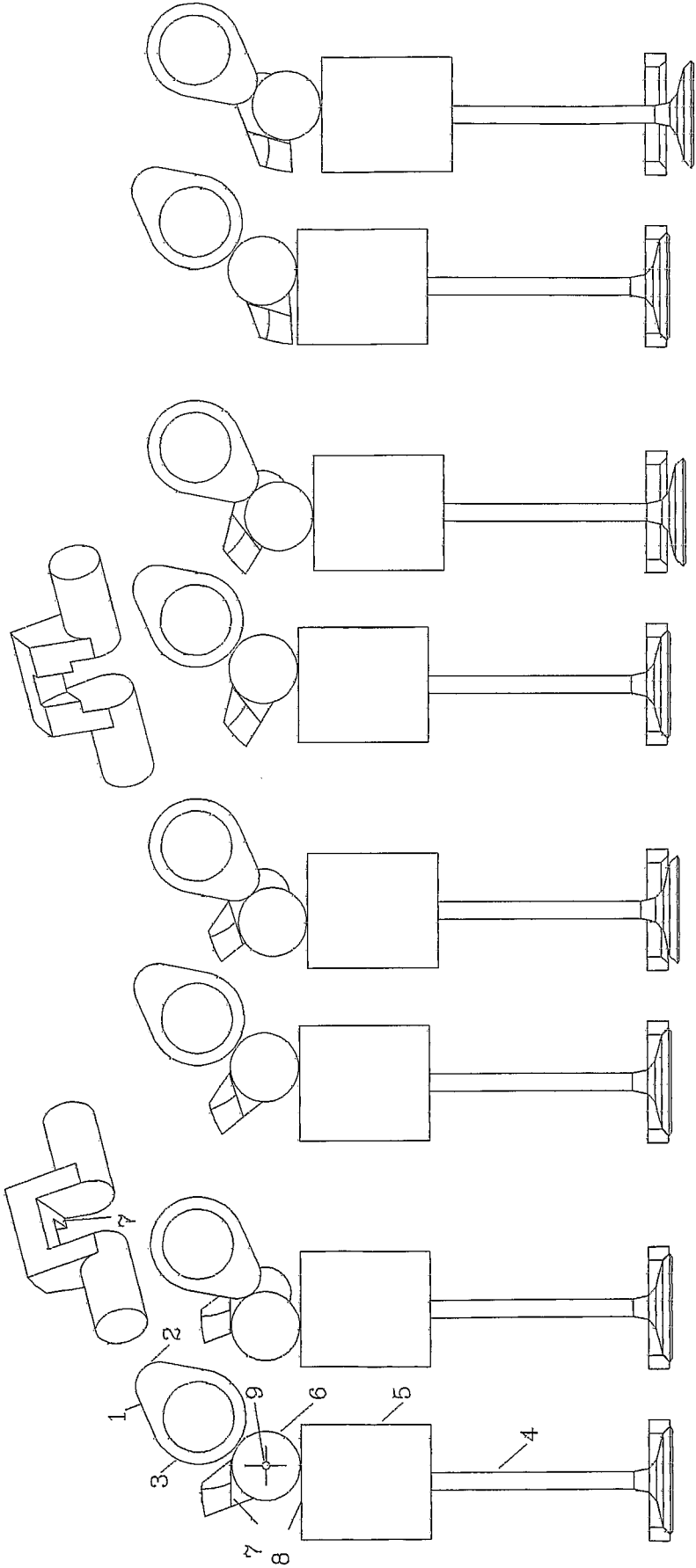


FIG 8

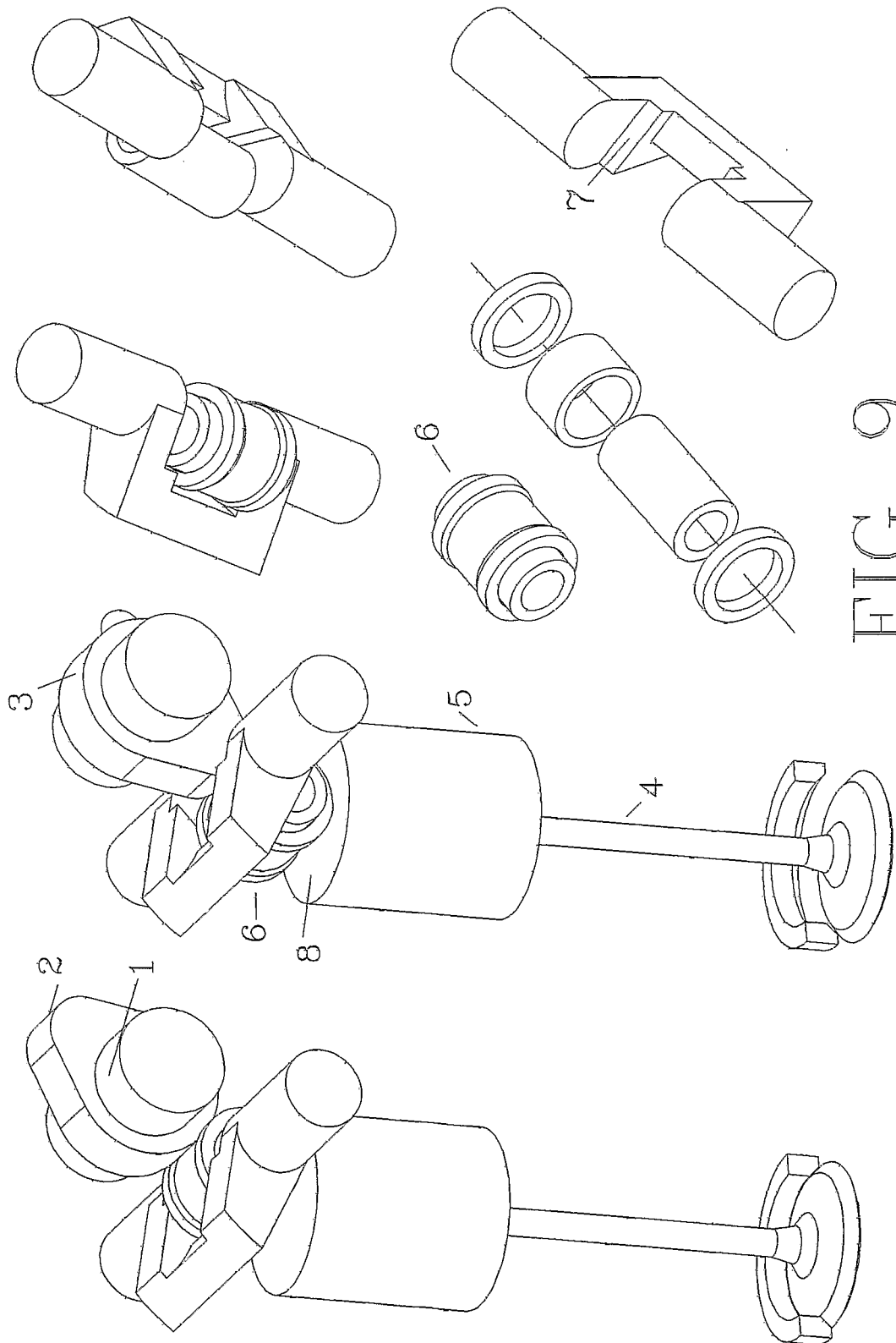


FIG 9

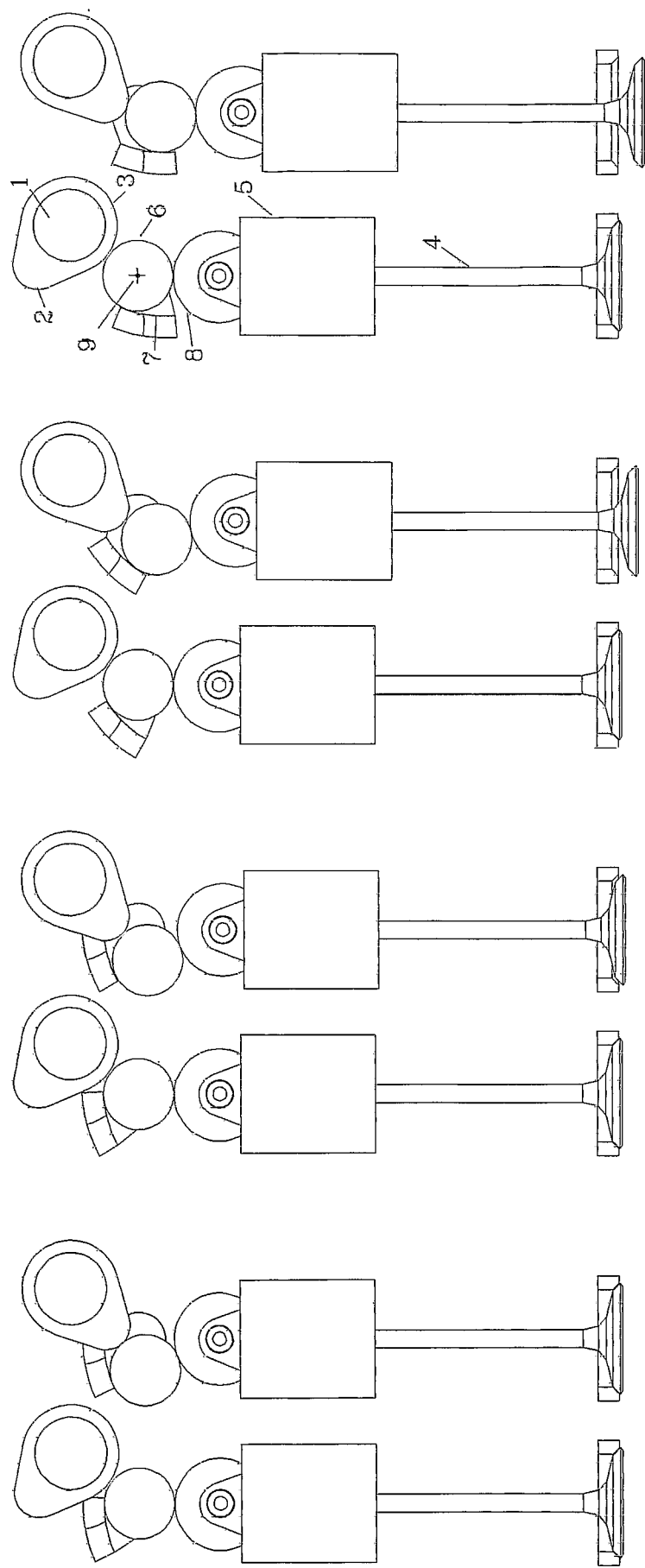


FIG 11

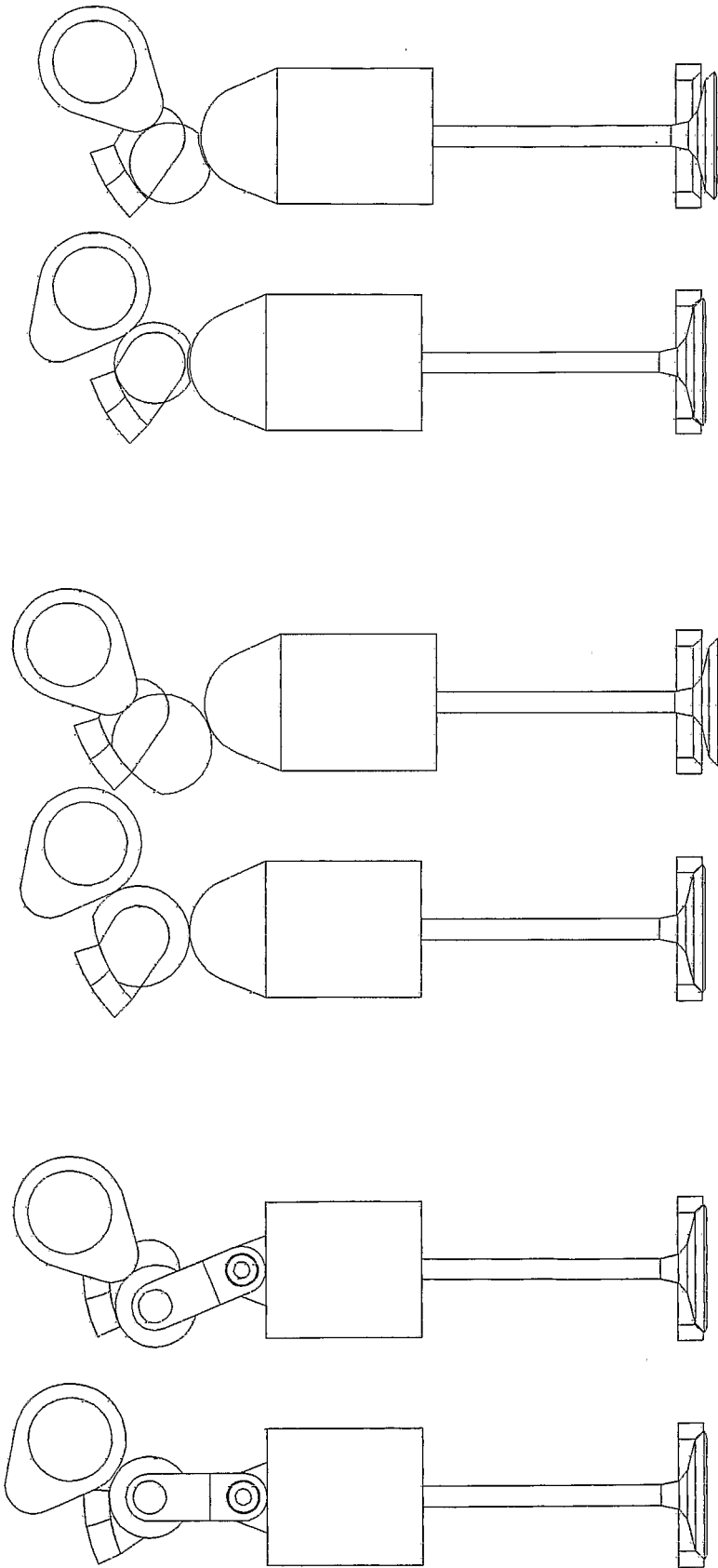


FIG 14

FIG 13

FIG 12

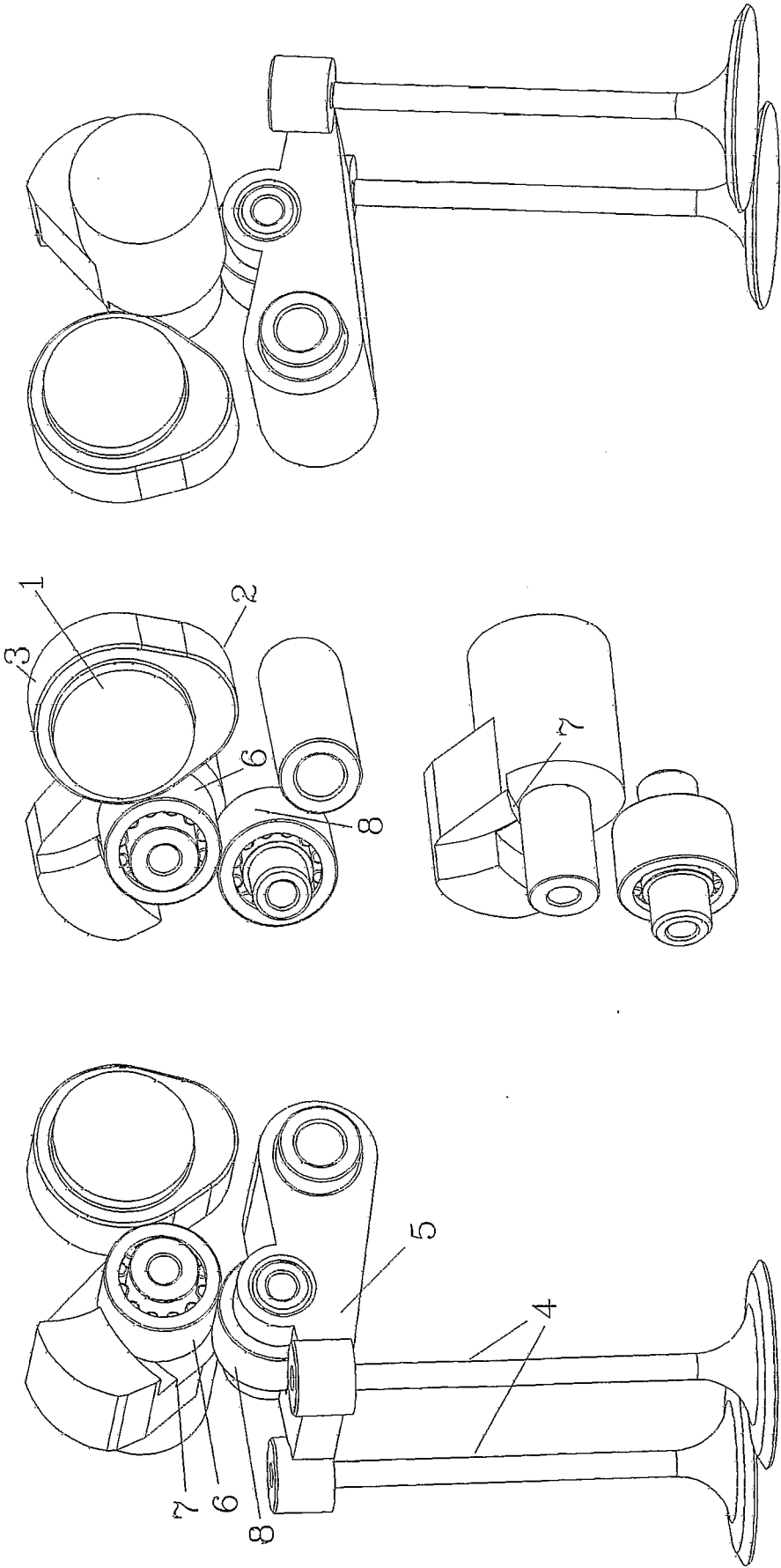


FIG 15

12/16

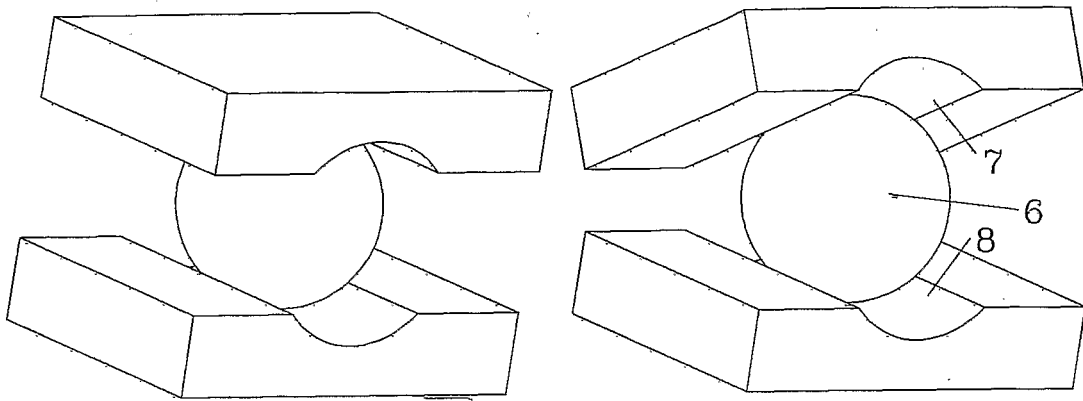


FIG 16

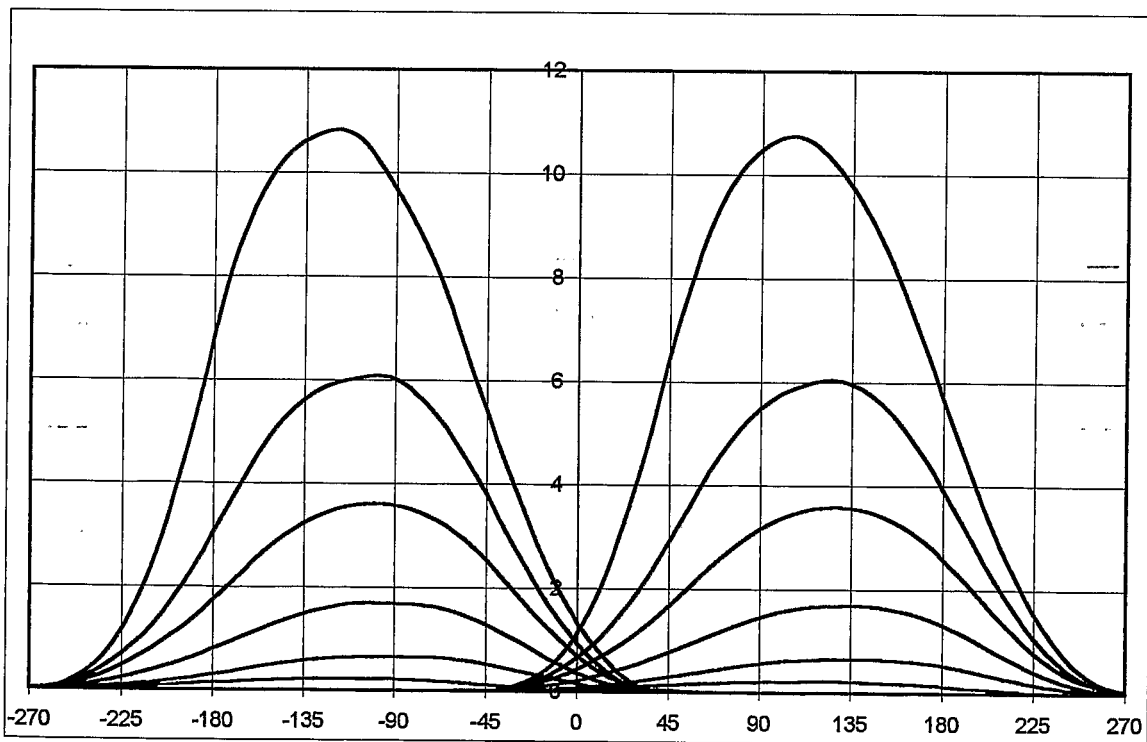


FIG 17

13/16

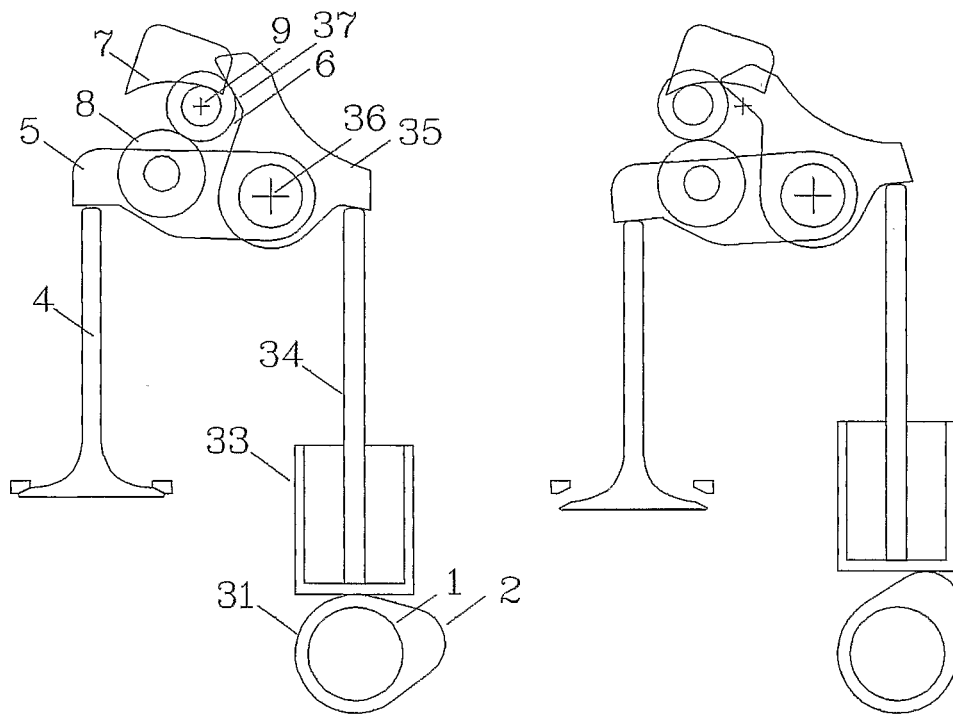


Fig 18

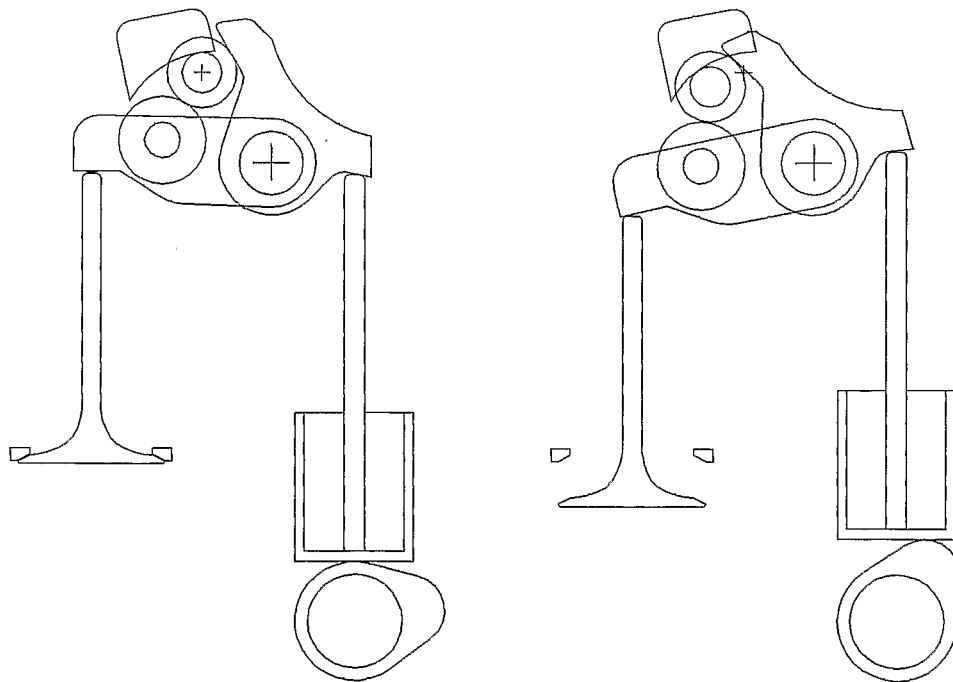
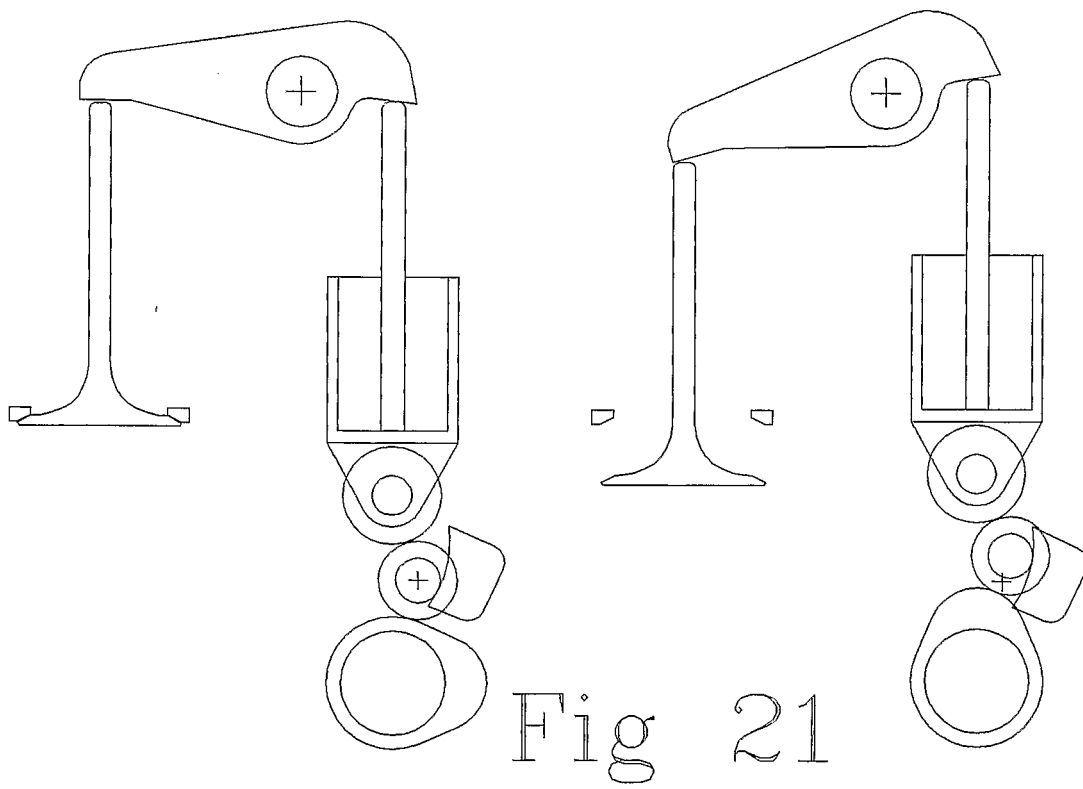
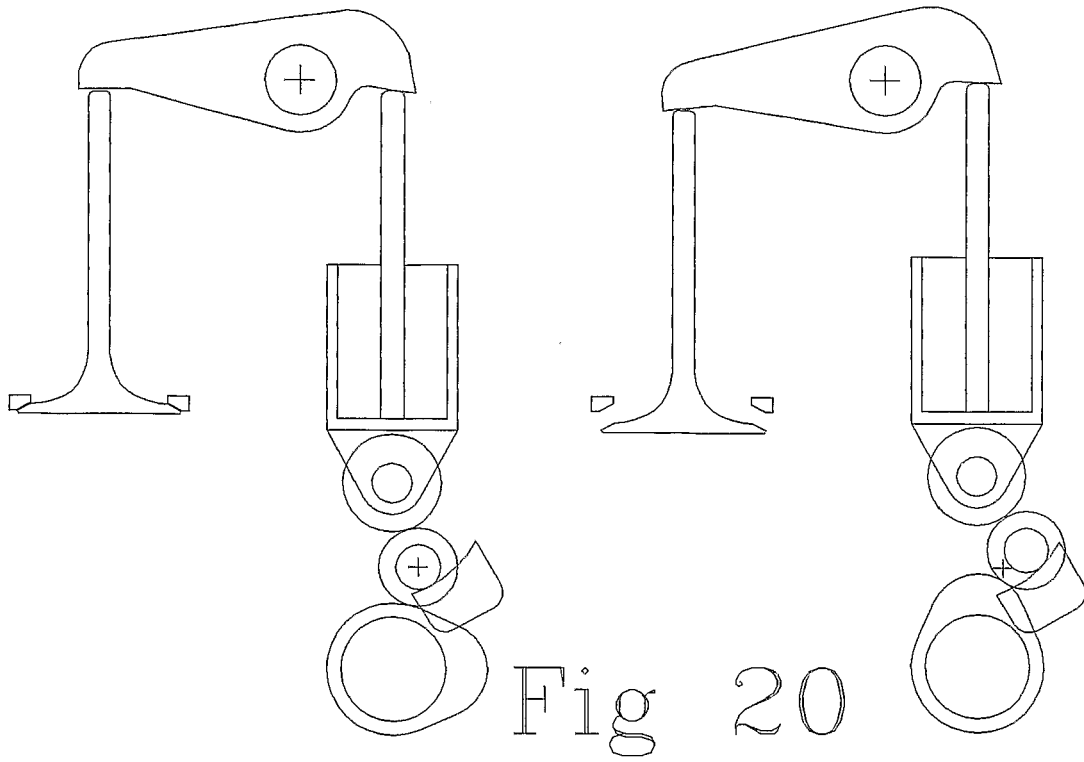


Fig 19

14/16



15/16

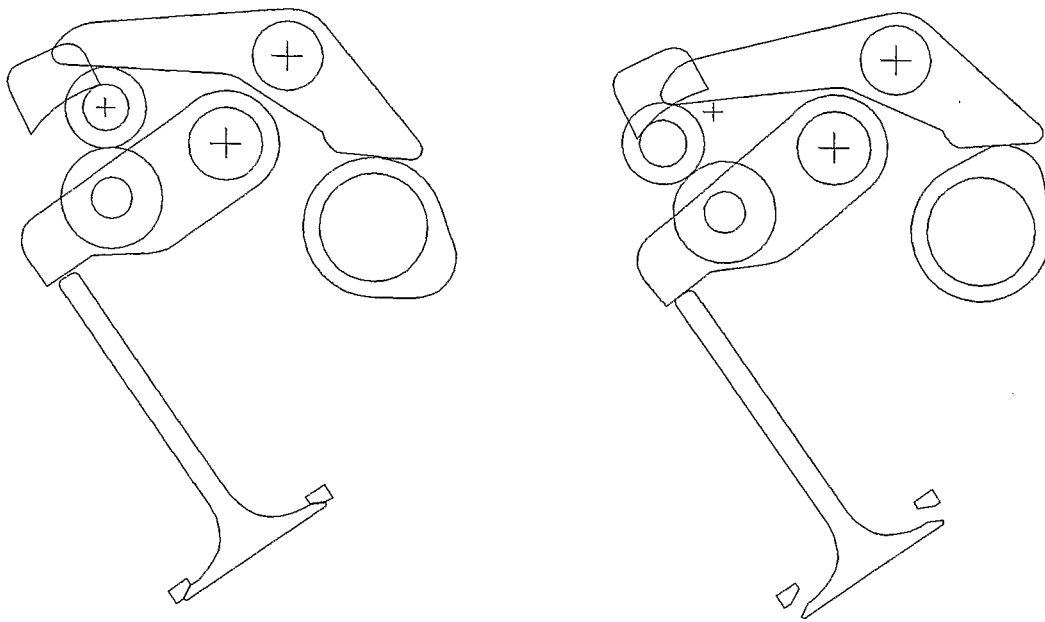


Fig 22

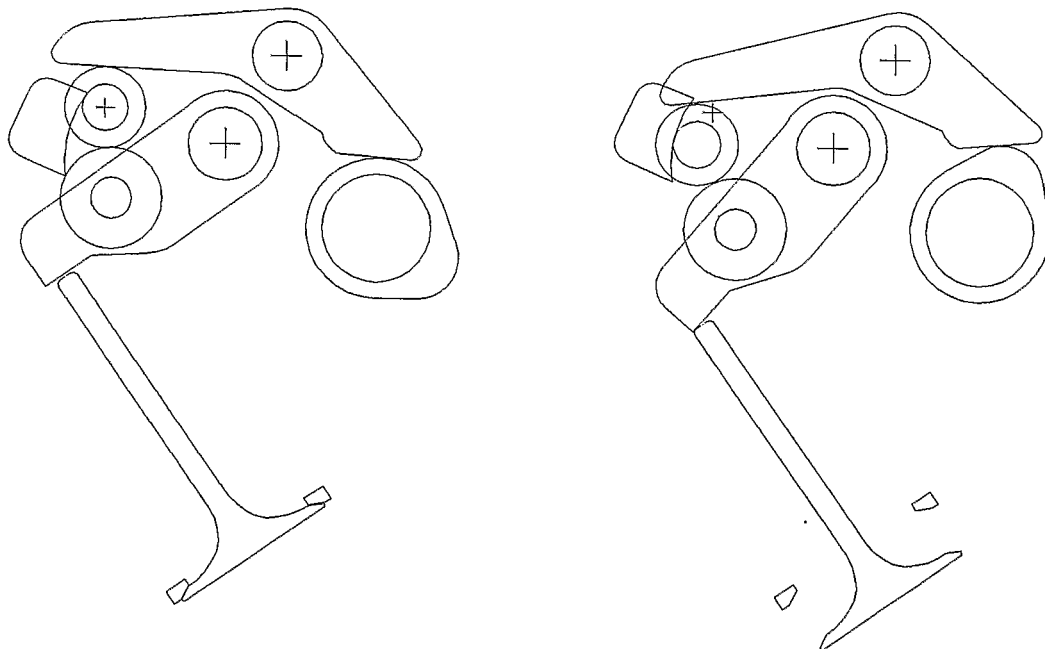


Fig 23

16/16

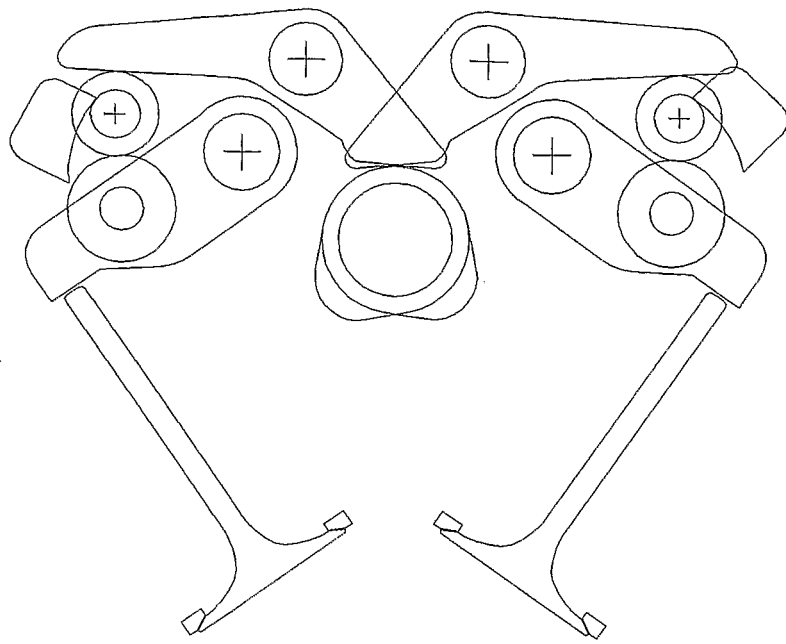


Fig 24

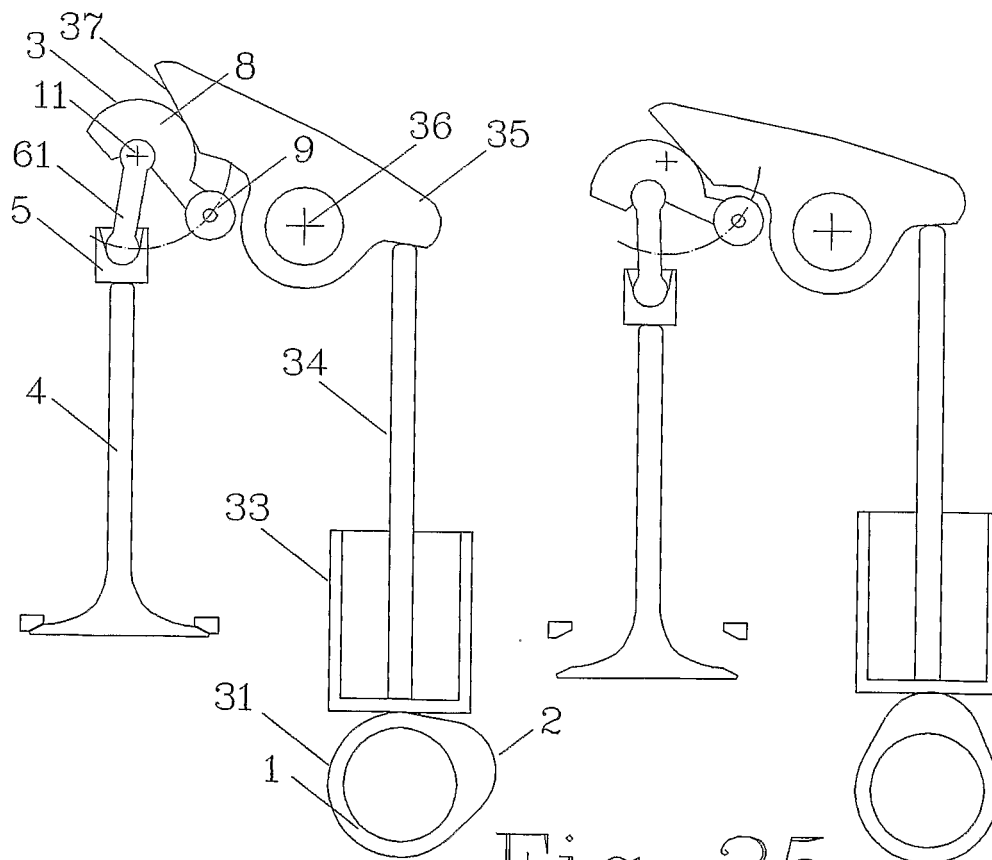


Fig 25

INTERNATIONAL SEARCH REPORT

International Application No
PCT/GR2004/000043A. CLASSIFICATION OF SUBJECT MATTER
IPC 7 F01L13/00

According to International Patent Classification (IPC) or to both national classification and IPC

B. FIELDS SEARCHED

Minimum documentation searched (classification system followed by classification symbols)
IPC 7 F01L

Documentation searched other than minimum documentation to the extent that such documents are included in the fields searched

Electronic data base consulted during the international search (name of data base and, where practical, search terms used)

EPO-Internal

C. DOCUMENTS CONSIDERED TO BE RELEVANT

Category *	Citation of document, with indication, where appropriate, of the relevant passages	Relevant to claim No.
X	WO 03/062609 A (TURNER JAMES WILLIAM GRIFFITH ; LOTUS CAR (GB)) 31 July 2003 (2003-07-31)	1-3,7, 11,12,14
A	page 1, lines 7-20 page 5, lines 5-31 figures 1-4	11
X	WO 03/008772 A (NAUMANN HERBERT ; THYSSENKRUPP AUTOMOTIVE AG (DE)) 30 January 2003 (2003-01-30)	1-3,7, 11,12,14
	page 1, lines 1-7 page 4, paragraph 3 - page 6, paragraph 1 figure 2	
	----- -/--	

☒ Further documents are listed in the continuation of box C.☒ Patent family members are listed in annex.

* Special categories of cited documents :

- *A* document defining the general state of the art which is not considered to be of particular relevance
- *E* earlier document but published on or after the international filing date
- *L* document which may throw doubts on priority claim(s) or which is cited to establish the publication date of another citation or other special reason (as specified)
- *O* document referring to an oral disclosure, use, exhibition or other means
- *P* document published prior to the international filing date but later than the priority date claimed

T later document published after the international filing date or priority date and not in conflict with the application but cited to understand the principle or theory underlying the invention

X document of particular relevance; the claimed invention cannot be considered novel or cannot be considered to involve an inventive step when the document is taken alone

Y document of particular relevance; the claimed invention cannot be considered to involve an inventive step when the document is combined with one or more other such documents, such combination being obvious to a person skilled in the art.

& document member of the same patent family

Date of the actual completion of the international search

7 December 2004

Date of mailing of the international search report

16/12/2004

Name and mailing address of the ISA

European Patent Office, P.B. 5818 Patentlaan 2
NL - 2280 HV Rijswijk
Tel. (+31-70) 340-2040, Tx. 31 651 epo nl,
Fax: (+31-70) 340-3016

Authorized officer

Paquay, J

INTERNATIONAL SEARCH REPORT

 International Application No
 PCT/GR2004/000043

C.(Continuation) DOCUMENTS CONSIDERED TO BE RELEVANT

Category *	Citation of document, with indication, where appropriate, of the relevant passages	Relevant to claim No.
X	DE 198 25 308 A (BAYERISCHE MOTOREN WERKE AG) 9 December 1999 (1999-12-09) column 1, lines 3-16 column 4, lines 45-61 figures 2,3 -----	1-3,7,11
A	EP 1 243 765 A (YAMAHA MOTOR CO LTD) 25 September 2002 (2002-09-25) paragraph '0007! - paragraph '0008! paragraph '0026! - paragraph '0028! figures 1,2 -----	1-8,11, 14
A	DE 42 20 816 A (SCHAEFFLER WAEHLZLAGER KG) 5 January 1994 (1994-01-05) column 1, lines 3-10 column 2, line 57 - column 3, line 52 figures 1-6 -----	1-8,11, 12
A	WO 02/103169 A (PATTAKOS MANOUSOS ; PATTAKOS JOHN (GR); PATTAKOS EMMANOUEL (GR)) 27 December 2002 (2002-12-27) cited in the application page 1, lines 1-5 page 2, lines 25-27 figures 1-9,19-22 -----	1,15
A	DE 100 61 618 A (IAV GMBH) 27 June 2002 (2002-06-27) paragraph '0001! paragraph '0003! paragraph '0015! - paragraph '0017! figures 1-4 -----	1-8,11, 12
A	EP 1 205 643 A (BATTLOGG STEFAN) 15 May 2002 (2002-05-15) paragraph '0001! figures 1-9 -----	1-8,10, 15

INTERNATIONAL SEARCH REPORT

Information on patent family members

International Application No

PCT/GR2004/000043

Patent document cited in search report		Publication date		Patent family member(s)	Publication date
WO 03062609	A	31-07-2003	GB	2384271 A ,B	23-07-2003
			WO	03062609 A1	31-07-2003
WO 03008772	A	30-01-2003	DE	10136612 A1	06-02-2003
			BR	0210830 A	22-06-2004
			CA	2447252 A1	30-01-2003
			WO	03008772 A1	30-01-2003
			EP	1412621 A1	28-04-2004
			HU	0304040 A2	28-07-2004
			JP	2004522065 T	22-07-2004
			US	2004118369 A1	24-06-2004
DE 19825308	A	09-12-1999	DE	19825308 A1	09-12-1999
			DE	59909838 D1	05-08-2004
			EP	0962629 A2	08-12-1999
			US	6145485 A	14-11-2000
EP 1243765	A	25-09-2002	JP	2002276315 A	25-09-2002
			EP	1243765 A1	25-09-2002
			US	2002129779 A1	19-09-2002
DE 4220816	A	05-01-1994	DE	4220816 A1	05-01-1994
WO 02103169	A	27-12-2002	GR	2001100295 A	27-02-2003
			CA	2459544 A1	27-12-2002
			EP	1407121 A1	14-04-2004
			WO	02103169 A1	27-12-2002
			JP	2004521245 T	15-07-2004
			US	2004144346 A1	29-07-2004
DE 10061618	A	27-06-2002	DE	10061618 A1	27-06-2002
EP 1205643	A	15-05-2002	EP	1205643 A1	15-05-2002